



© COPYRIGHT 2024 MDF ITALIA SRL SOCIETA' UNIPERSONALE

2023

## ROCK TABLE MINI

Designed by Jean Marie Massaud

The Rock Table family also includes the Mini Rock Tables: coffee tables with a strong personality, in which the lines of the collection are appropriately reportioned to create furnishing accessories for the indoor or outdoor living space. These tables come with tops in three different heights and sizes, a trio useful for creating a wide range of compositions.

[DISCOVER THE INDOOR VERSION](#)

### DIMENSIONS

The tops are combined with the relative heights:

- top Ø60 cm, table height 53 cm;
- top Ø80 cm, table height 46 cm;
- top Ø100 cm, table height 39 cm.

### TABLETOP

#### CEMENT

In white or anthracite UHPFRC cement (ultra high performance, fibre reinforced cement), with high technical / structural characteristics. Tops: Ø60, Ø80 and Ø100 cm.

#### STONE CHIP CEMENT

In UHPFRC (ultra high performance, fibre reinforced cement), with high technical / structural characteristics, coloured in mass using natural oxides, enhanced with a stone chip surface made up of Alpine rocks and stones (white and green stone chip top), or stone chip made up of stones from Tuscany (terracotta top). Tops: Ø60, Ø80 and Ø100 cm.

# MONOCHROME COMBINATIONS

## WHITE VERSION

Base in natural cement, matt white tube and flange, white cement or white stone chip cement top.

## ANTHRACITE VERSION

Base in anthracite cement, matt anthracite tube and flange and anthracite cement top.

## ORANGE VERSION

Base in terracotta cement, matt orange tube and flange, terracotta stone chip cement top.

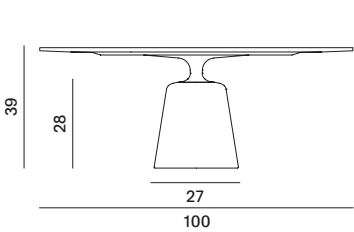
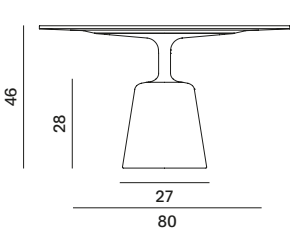
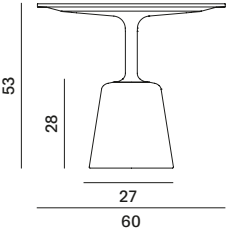
## GREEN VERSION

Base in green cement, matt green tube and flange, green stone chip cement top.

# INDOOR USE

The coffee tables are available also in indoor vesione with lacquered or wood top.

Rock Table Mini



# Finishing

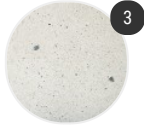
The number in the dot corresponds to the number of colour/material finish.

Here below, in the section FINISH OPTIONS, please note all the colours of the materials used for this product.

## COFFEE TABLES

---

### Top



Stone chip cement



Cement

### Structure



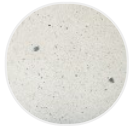
Cement

# Finish options

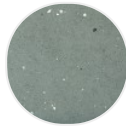
## TOP

---

### Stone chip cement



White stone  
chip cement



Green stone  
chip cement

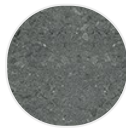


Terracotta  
stone chip  
cement

### Cement



White cement



Anthracite  
cement

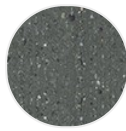
## STRUCTURE

---

### Cement



Cement  
natural X080



Cement  
anthracite  
X081



Cement green



Cement  
terracotta